



Proliferating pilomatrixoma – A mimicker of matricial carcinoma



Nivetha Ambalavanan, Rohan Sardana, Sudheer Arava, Shipra Agarwal, Somesh Gupta
Dept of Pathology, All India Institute of Medical Sciences, New Delhi

Introduction

Proliferating pilomatrixoma (PP) is a rarely reported proliferative variant of pilomatrixoma. First described by Kaddu S et al in 1997, presenting usually as a solitary nodule with increased rate of recurrence post-excision

Background

Pilomatrixoma or calcifying epithelioma of Malherb (CEM), first described in 1880 by Malherb and Chenantais, represents approximately 1% of all benign skin tumours. It is the second most common cutaneous neoplasm in childhood and youth. It is usually slow-growing, firm, dermal or subcutaneous neoplasm, measures < 3cm in diameter.

Clinical presentation

40 year old Indian male presented with one year history of well-defined, firm, mobile mass of 1.5cm size in upper arm. Patient had recurrence in the same site thrice. History of no other swellings present in the patient. No history of lymphadenopathy present

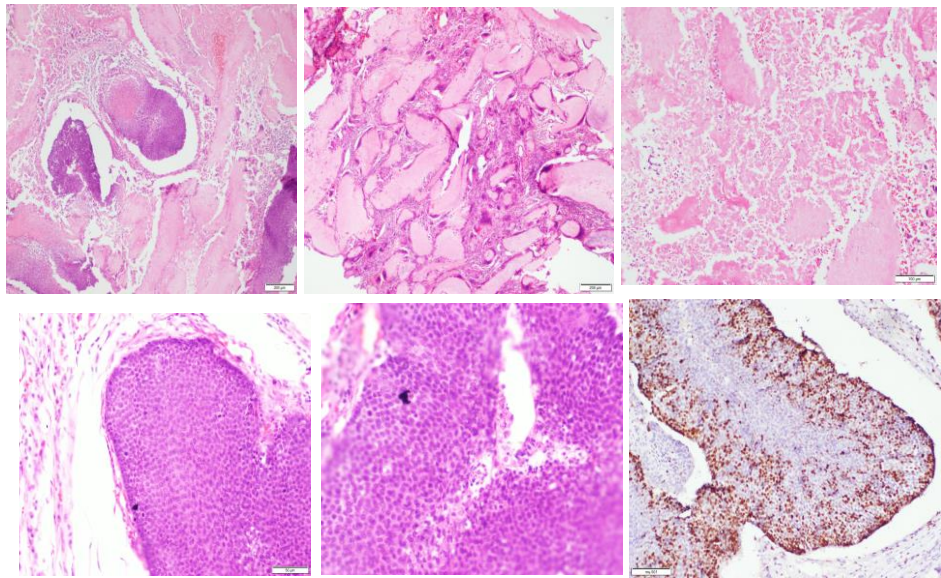
Discussion

Proliferating pilomatrixoma must be differentiated from pilomatrixoma when increased mitotic figures and atypia is seen. In cases with symmetry and lack of circumscription, pilomatricial carcinoma is suspected.

Differential diagnosis :

1. Basal cell carcinoma with matricial differentiation
2. Neoplasm with matricial differentiation
3. Pilomatricial carcinoma

Histomorphology



References

1. Grohs R, Mesbah Ardakani N, Harvey N, Luczak B, Wood B. Giant proliferating pilomatricoma; report of a rare entity. Australasian Journal of Dermatology. 2016;58(3):e91-e93.